

September 20, 2011

The Continuing Medical Education (CME) office in conjunction with I.T. is pleased to inform you that the "CME Live View" desktop icon is now active. You will be able to view grand rounds, tumor boards and other conferences as they are happening.

Currently the three rooms listed below have been outfitted with the technology that will provide you live viewing of the presentations.

- Gilman Auditorium
- Bliss 303
- JB118

Only conferences conducted in these rooms will be viewable.

These programs are available to Hartford Hospital and most of the Hartford Health Care entities.

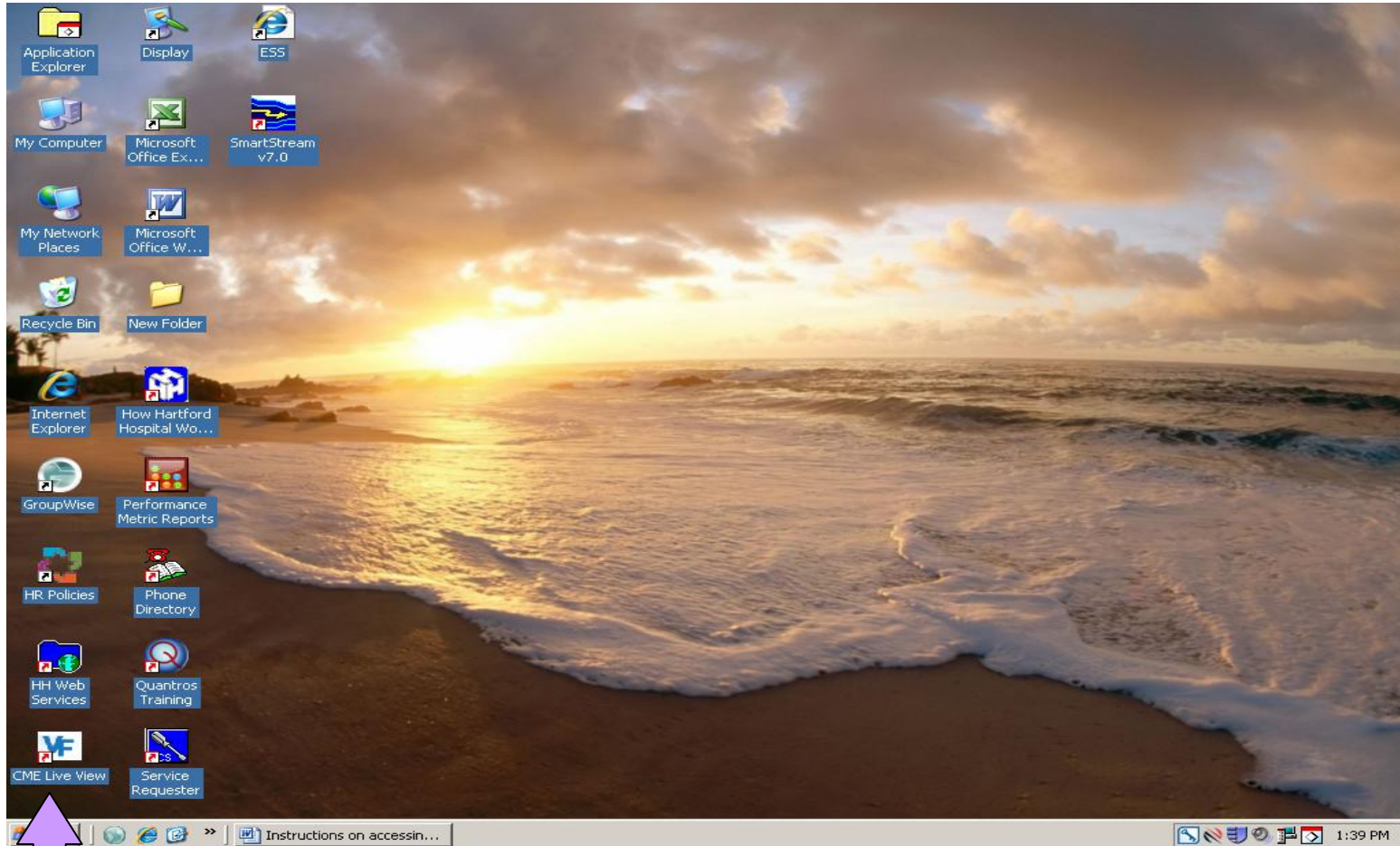
Instructions on how to access this icon, and a listing of the available programs and the frequency and times held, are on the next page. The program grid seldom changes, however, departments may cancel a program without notice.

You can find out the topics for the week via the bi-weekly Corporate Communications Extra email.

Please note we are **not** currently able to document your CME participation from the desktop. If you require CME credit you will need to attend the live program, sign in and do the program evaluation **or** document your desktop participation for your own records. We are continuing to work on developing this capability as soon as possible. Stay Tuned!

If you do not have the CME Live View icon on your desktop or are having trouble viewing the program please contact the I.T. Helpdesk at 860-545-5699.

How to access the CME Live Desktop Icon



Double click on VF CME Live View icon

Scroll down on the schedule grid until you come to the VF InStream Icon

The screenshot shows a Windows Internet Explorer browser window displaying a schedule grid. The grid contains several rows of schedule information. At the bottom of the grid, there is a blue icon with the text 'VF InStream' and a play button symbol. A purple arrow points upwards from below the grid to this icon. The browser's address bar shows the URL 'https://hhvfportal.hh.chs/#/assets.php'. The browser's menu bar includes 'File', 'Edit', 'View', 'Favorites', 'Tools', and 'Help'. The browser's toolbar includes 'Favorites', 'Suggested Sites', and 'Web Slice Gallery'. The browser's status bar shows 'Page', 'Safety', and 'Tools'.

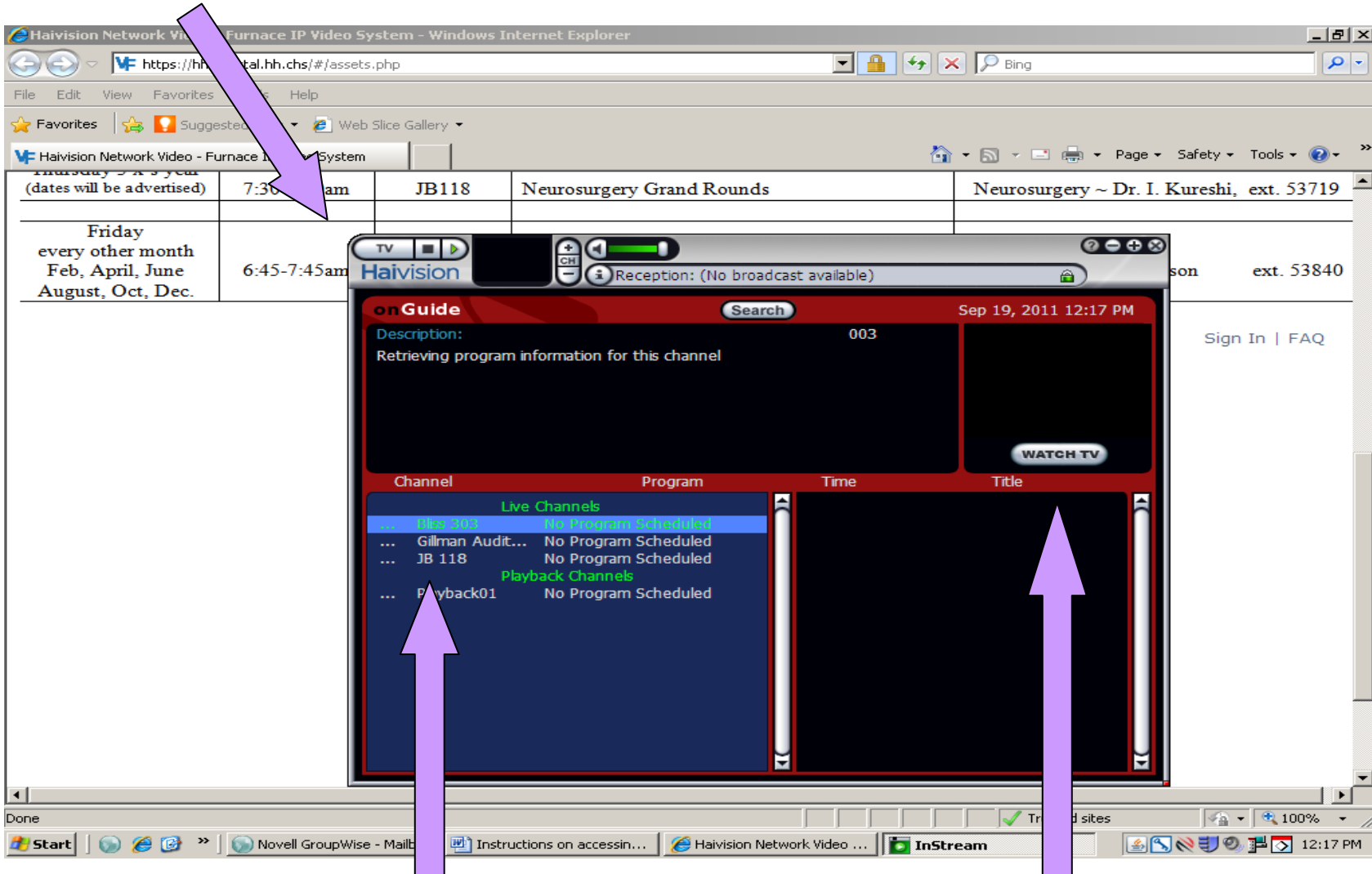
Thursday Weekly	7:30-8:30am	Bliss 303	General Surgical Oncology Tumor Boards	Oncology ~ Susan Wright ext. 55700
Thursday Weekly	8:00-9:00am	Gilman Aud.	Medicine Grand Rounds	Medicine ~ Farris Milling ext. 52085
Thursday Weekly	8:00-9:00am	JB118	Neurology Grand Rounds	Neurology ~ Sandy Lindsay ext. 53621
1 st Thursday	12:00-1:00pm	Bliss 303	Transplant Pathology Conference	Pathology ~ Julie Root ext. 52866
1 st Thursday	12:00-1:00pm	Gilman Aud.	Medicine Endocrine Intercity Grand Rounds	Medicine ~ Farris Milling ext. 52085
3 rd Thursday	7:30-8:00am	JB118	Neurology Brain Tumor Conference	Neurology ~ Sandy Lindsay ext. 53621
3 rd Thursday	12:00-1:00pm	Gilman Aud.	Emergency Medicine Grand Rounds	EM ~ Leslie Lukowski ext. 51448
Thursday 3 x's year (dates will be advertised)	7:30-9:00am	JB118	Neurosurgery Grand Rounds	Neurosurgery ~ Dr. I. Kureshi, ext. 53719
Friday every other month Feb, April, June August, Oct, Dec.	6:45-7:45am	Gilman Aud.	Surgery Grand Rounds	Surgery ~ Herma Johnson ext. 53840

Sign In | FAQ

VF InStream

Click on VF InStream Icon

- Haivision program guide will load



- Double click the room you wish to view

Click on watch TV for full screen viewing

**2011
Hartford Hospital
Live View CME Program Guide**

Day/Frequency	Time	Location	Program Title	Department Section Person Responsible
1 st Monday	7:00-8:00am	Bliss 303	Upper GI	Oncology ~ Ginelle McPherson ext. 54594
Tuesday Weekly	7:00-8:00am	Bliss 303	Breast Tumor Boards	Oncology ~ Karen Weingrod ext. 51018
Tuesday Weekly	11:00-12:00pm	JB118	Cardiology Grand Rounds	Cardiology ~ Sharon Ballot ext. 51793
2 nd Tuesday	12:00-1:00pm	Bliss 303	Transplant Clinical Conference	Transplant ~ Sue Podolski ext. 54339
3 rd Tuesday	12:00-1:00pm	Bliss 303	Gastrointestinal Interdisciplinary Conference	Pathology ~ Sue Podolski ext. 54339
4 th Tuesday	12:00-1:00pm	Bliss 303	GI Conference	CT. GI ~ Madona Robinson ext. 53069
1 st Wednesday	7:00-8:00am	Bliss 303	Neuro/Oncology Tumor Boards	Oncology ~ Susanne Morrill ext. 51588
2 nd Wednesday	7:00-8:00am	Bliss 303	Lower GI Tumor Boards	Oncology ~ Ginelle McPherson ext. 54594
4 th Wednesday	7:00-8:00am	Bliss 303	Upper & Lower GU Tumor Boards	Oncology ~ Ginelle McPherson ext. 54594
Thursday Weekly	7:30-8:30am	Bliss 303	General Surgical Oncology Tumor Boards	Oncology ~ Susan Wright ext. 55700
Thursday Weekly	8:00-9:00am	Gilman Aud.	Medicine Grand Rounds	Medicine ~ Farris Milling ext. 52085
Thursday Weekly	8:00-9:00am	JB118	Neurology Grand Rounds	Neurology ~ Sandy Lindsay ext. 53621
1 st Thursday	12:00-1:00pm	Bliss 303	Transplant Pathology Conference	Pathology ~ Sue Podolski ext. 52866
1 st Thursday	12:00-1:00pm	Gilman Aud.	Medicine Endocrine Intercity Grand Rounds	Medicine ~ Farris Milling ext. 52085
3 rd Thursday	7:30-8:00am	JB118	Neurology Brain Tumor Conference	Neurology ~ Sandy Lindsay ext. 53621
3 rd Thursday	12:00-1:00pm	Gilman Aud.	Emergency Medicine Grand Rounds	EM ~ Leslie Lukowski ext. 51448
Thursday 3 x's year (dates will be advertised)	7:30-9:00am	JB118	Neurosurgery Grand Rounds	Neurosurgery ~ Dr. I. Kureshi, ext. 53719
Friday every other month Feb, April, June August, Oct, Dec.	6:45-7:45am	Gilman Aud.	Surgery Grand Rounds	Surgery ~ Herma Johnson ext. 53840